



# KANSAS PUBLIC HIGHER EDUCATION - QUICK FACTS

The nine-member Kansas Board of Regents is the governing board of the state's six universities and the statewide coordinating board for the state's 32 public higher education institutions (seven public universities, 19 community colleges, and six technical colleges). In addition, the Board administers the state's student financial aid, adult education, GED, career and technical education programs, and the state university retirement plans. The Board also approves private proprietary schools and out-of-state institutions to operate in Kansas, and administers the Kan-ed network, a statewide network that provides broadband Internet access and distance learning capabilities for schools, hospitals, and libraries.

## STUDENTS, FACULTY & STAFF

### Full-Time Equivalent (FTE) Student Enrollment (Fall 2010)

	4-Year Universities	2-Year Institutions
Total Students	81,582	53,984
<b>System Total</b>	<b>135,566</b>	

### Student Headcount (Fall 2010)

	4-Year Universities	2-Year Institutions
Total Students	101,199	86,219
<b>System Total</b>	<b>187,418</b>	

### Degrees Awarded

*First Majors Only, Academic Year 2010*

	4-Year Universities	2-Year Institutions
Technical Certificate	949	7,009
Associate's	318	7,208
Bachelor's	13,945	—
Master's	4,713	—
Doctoral	1,270	—
<b>System Total</b>	<b>35,412</b>	

### Total System Employment, Faculty and Staff

*Fall 2009*

	4-Year Universities	2-Year Institutions
Faculty	7,154	5,119
Non-Faculty Staff	11,699	4,926
<b>System Total</b>	<b>28,898</b>	

**Mission:** The Kansas Board of Regents shall pursue measurable continuous improvement in the quality and effectiveness of the public postsecondary educational system in Kansas, while expanding participation for all qualified Kansans. To achieve that mission, the board will demand accountability, focus resources, and advocate powerfully.

## STUDENT FINANCIAL ASSISTANCE

The Board also administers the state's student financial assistance programs. Financial assistance is more than student loans, with numerous scholarships, grants and awards open to students with diverse backgrounds and interests.

In FY 2010, over \$20 million in state funding was made available for student financial assistance. Over 13,000 students received state financial assistance through 16 scholarship, waiver, grant, and other programs.

### Student Financial Assistance Programs

*By Type*

	Programs	Recipients	Dollars Awarded
Grants	1	10,682	\$15.2 million
Scholarships	4	1,547	\$1.8 million
Service Scholarships	7	983	\$3.7 million
Waivers	2	14	\$42,638
Other*	2	419	\$1.3 million
<b>Total</b>	<b>16</b>	<b>13,645</b>	<b>\$22 million</b>

*\*Includes loan, work study, and fellowship programs.*

## ADULT EDUCATION

The Board is responsible for administering the state's Adult Basic Education programs. These programs serve adults, age 16 and over, who are not enrolled in school and need a high school credential and/or basic skills enhancement for their multiple roles as employees, community members, and family members.

In FY 2010, 30 programs served over 11,000 adults in 45 counties and 95 locations. As a result of participation in adult education programs, adult learners achieved the following outcomes: 5,325 made significant educational gains; 1,311 earned a GED; 3,443 entered employment; 5,311 retained or improved employment; and 767 entered postsecondary education.

## PRIVATE AND OUT-OF-STATE INSTITUTIONS

The Board authorizes private and out-of-state postsecondary institutions to operate in Kansas. These institutions offer associate, bachelor, master, and professional degrees, along with certificates and diplomas. There are currently 149 private or out-of-state institutions authorized to operate in Kansas serving 50,000 students. These institutions offer credentials in most professional, medical, business, computer technology and vocational fields.

## KAN-ED

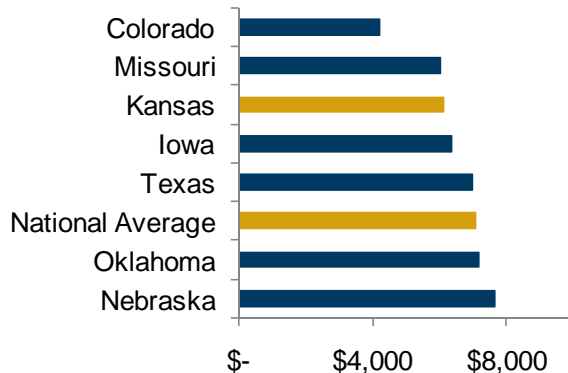
Kan-ed, a program administered by the Board, ensures that the state's hospitals, libraries, higher education institutions, and K-12 public and private schools have quality, affordable access to the Internet and to interactive distance learning opportunities.

	Hospitals	K-12	Higher Education	Libraries	Total
Members 12/31/10	153	339	53	338	<b>883</b>

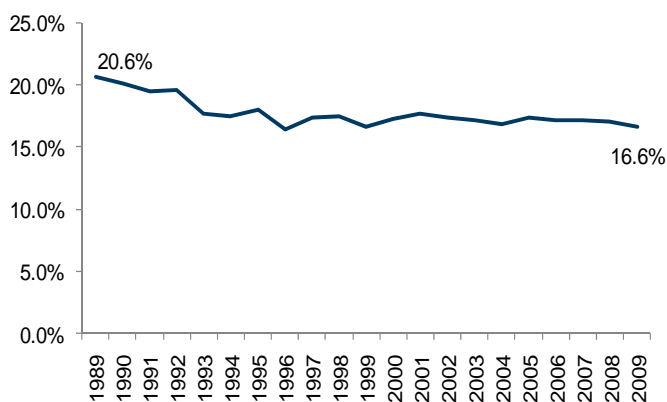
## FUNDING

Nationally, the average state and local investment in public higher education in 2008 was \$7,059 per full-time student. In Kansas, the total investment in public higher education is less than the national average at \$6,125 per full-time student.

**Big 12 State and Local Spending on Higher Education (2008)**



**Percent Total State Expenditures on Higher Education FY 1989-2009**



In FY 2009, total state general fund appropriations for public higher education were \$803.0 million. These dollars are distributed to the 32 public institutions, support the Board's student financial assistance programs, and provide the operating budget for the Board Office.

**State General Fund Appropriations (FY09)**

	\$ in Millions	% of Total
State Universities	615.2	76.6
Community Colleges	105.4	13.1
Technical Institutions	33.7	4.2
Washburn University	12.0	1.5
Board Student Financial Assistance Programs	21.9	2.7
Other Programs	9.0	1.1
Board Office	5.8	.7
<b>System Total</b>	<b>\$803.0 million</b>	

**Public Higher Education System Revenue (FY09)**

	\$ in Millions	% of Total
Total State Funding	823.2	28.6
Tuition & Fees	651.1	22.6
Federal Operating Grants & Contracts	415.6	14.4
Sales & Services of Auxiliary Enterprises	293.2	10.2
Local Appropriations	230.8	8.0
All Other Sources	467.2	16.2
<b>System Total</b>	<b>\$2881.1</b>	

**Revenue Distribution by Percent (FY09)**

	State Universities	2-Year Institutions	Washburn University
Total State Funding	31.0	22.4	15.8
Tuition & Fees	23.9	16.6	38.9
Local Appropriations	0	31.2	29.5
All Other	45.2	29.8	15.9